

The monastery and its practitioners have held their unique lineage for over 2,500 years. These practices are needed more than ever in this 21st century, in which more and more people are driven to find inner peace.

Your support will provide tremendous help for the monastery to bring these teachings of ancient and authentic wisdom and compassion to benefit more people around the world.

現今21世紀，人們最需要、最重要的是內在的平靜。寺院和修行人員備2500多年傳續下來的特別傳承和修持的古老智慧。

因此，這樣的一個教育平台，一個修心的寺院，能將我們所持有的智慧傳承和經驗延續及分享出去。

有了十方護持，重建才有可能。完成這項計劃，在未來將利益更多人。

## Objectives 目標



Join our "Brick of Hope" program to support the rebuilding.

請立即加入<希望之磚>捐助計劃，一起護持共建光明寺。



<http://eform.tergarasia.org/brick-of-hope/>

For more details of rebuild project, please refer to our website or QR code link

有關重建項目的詳細信息，請參閱網站或QR代碼鏈接資料。



[www.tergarasia.org/featured/brick-of-hope/](http://www.tergarasia.org/featured/brick-of-hope/)

### Tergar Asia Foundation

Unit 1-6, 1/F Wellborne Commercial Building, 8 Java Road, North Point, Hong Kong  
Tel: 2566 1699 Fax: 2566 2900 Website: [www.tergarasia.org](http://www.tergarasia.org) Email: [donation@tergarasi.org](mailto:donation@tergarasi.org)

亞洲德噶基金會 香港北角渣華道8號威邦商業中心1樓101-106室  
電話：2566 1699 傳真：2566 2900 網站：[www.tergarasia.org](http://www.tergarasia.org) 電郵：[donation@tergarasi.org](mailto:donation@tergarasi.org)

For more details, please refer to our website 詳情請參閱網站資料

# TERGAR OSEL LING MONASTERY

Rebuild for Transformative Learning  
光明重建 - 重建光明



Tergar  
ASIA FOUNDATION  
亞洲德噶基金會

Your support helps Rinpoche's vision take another step 你的支持協助仁波切的願景更邁出一大步

## A LOOK BACK

### — 歷史回顧 —



The year Mingyur Rinpoche's father, Tulku Ugyen Rinpoche, began to build Osel Ling;  
明就仁波切父親祖古烏金仁波切於這年份在現址建立光明寺  
= 1988

The year Mingyur Rinpoche took responsibility for the monastery and opened a monastic college (shedra);  
明就仁波切於這年份正式接掌光明寺  
= 2010

The total number of Sangha in Osel Ling now  
光明寺現時入住的僧眾人數  
= 180 +

The total number of international students who have taken part in Mingyur Rinpoche's teaching programs at Osel Ling  
參加過明就仁波切歷年在光明寺開辦的課程的海外學員總人數  
= 3500+



# Rebuild for Transformative Learning

## 光明重建 - 重建光明

Everything you wanted to know about the reconstruction of Tergar Osel Ling that started in September

尼泊爾德噶光明寺於今年九月底正式開展重建工程，在此為您送上這個項目的更新資料

## GETTING INTO GEAR

### — 蓄勢待發 —



The year of the rebuilding project was officially launched;  
重建項目正式啟動年份  
= 2018

The year the project expected to be completed;  
重建項目預計圓滿年份  
= 2023

The estimated budget of the project;  
重建項目的預算開支  
= USD 10 million

The amount raised since the project planning began in May 2017;  
自2017年5月計劃開始，已籌得的款項  
= USD1.96 million

## ENVISIONING THE FUTURE

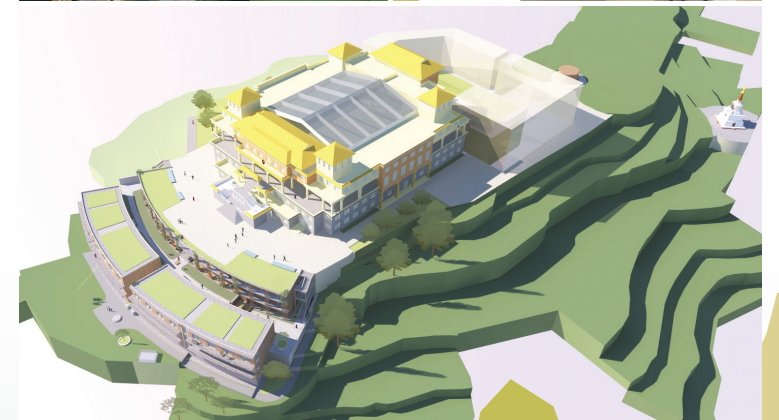
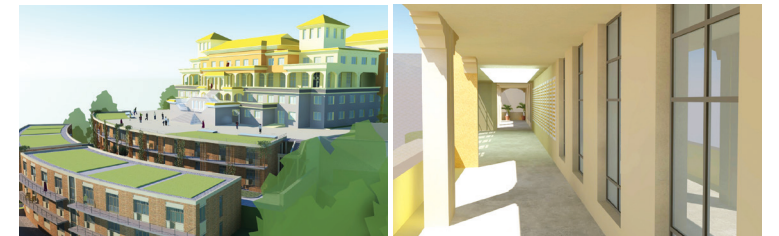
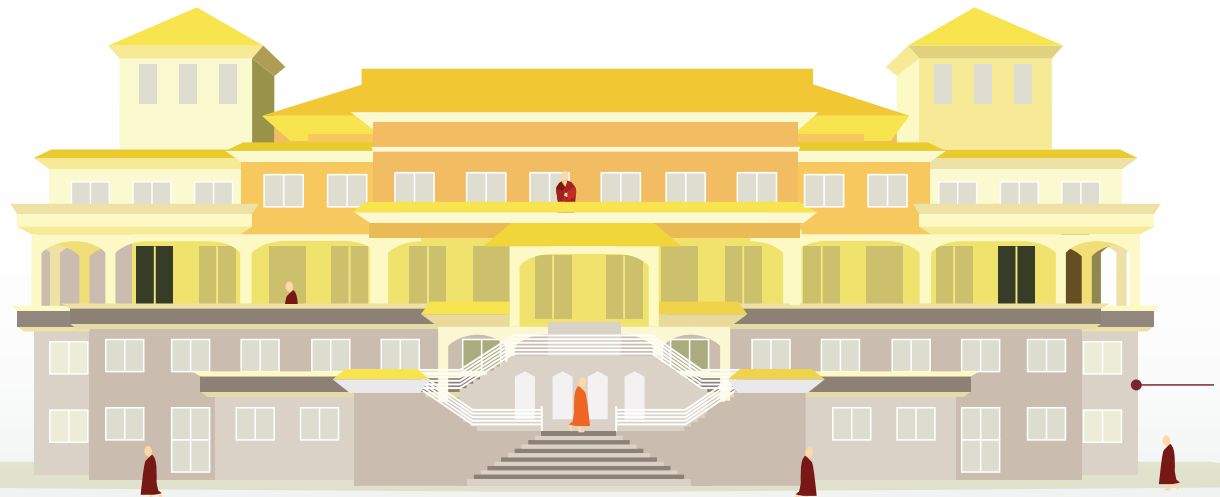
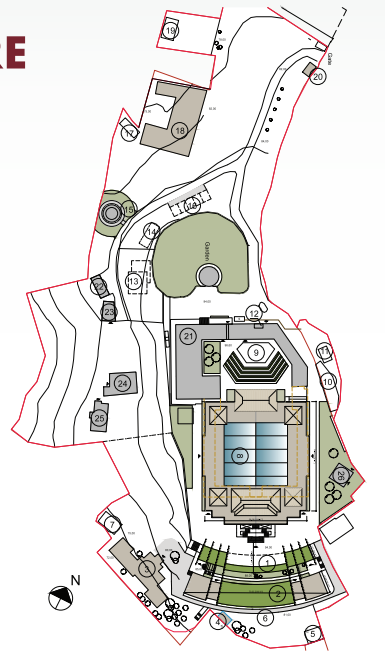
### — 展望未來 —

The number of monastics who can be accommodated upon the project's completion  
重建後，可容納僧眾入住數目  
= 300+

The seating capacity of the Main Shine Hall where Rinpoche will give teaching program  
重建後，主樓大殿可容納仁波切開課時入座人數  
= 2500+

The total area of the newly constructed main temple  
將興建寺院主樓的總面積  
= 79600 sq. ft.

The total area of the three newly built monks' quarters  
將興建三座僧眾宿舍總面積  
= 40000 sq. ft.



Folded size: w148.5 x h210 (mm) Open size: w445.5 x h210 (mm)

The monastery and its practitioners have held their unique lineage for over 2,500 years. These practices are needed more than ever in this 21st century, in which more and more people are driven to find inner peace.

Your support will provide tremendous help for the monastery to bring these teachings of ancient and authentic wisdom and compassion to benefit more people around the world.

現今21世紀，人們最需要、最重要的是內在的平靜。寺院和修行人具備2500多年傳續下來的特別傳承和修持的古老智慧。

因此，這樣的一個教育平台，一個修心的寺院，能將我們所持有的智慧傳承和經驗延續及分享出去。

有了十方的護持，重建才有可能。完成這項計劃，在未來將利益更多人。

## Objectives 目標



Join our "Brick of Hope" program to support the rebuilding.

請立即加入<希望之磚> 捐助計劃，一起護持共建光明寺。



<http://eform.tergarasia.org/brick-of-hope/>

For more details of rebuild project, please refer to our website or QR code link

有關重建項目的詳細信息，請參閱網站或QR代碼鏈接資料。



[www.tergarasia.org/featured/brick-of-hope/](http://www.tergarasia.org/featured/brick-of-hope/)

### Tergar Asia Foundation

Unit 1-6, 1/F Wellborne Commercial Building, 8 Java Road, North Point, Hong Kong  
Tel: 2566 1699 Fax: 2566 2900 Website: [www.tergarasia.org](http://www.tergarasia.org) Email: [donation@tergarsi.org](mailto:donation@tergarsi.org)

亞洲德鳴基金會 香港北角渣華道8號威邦商業中心1樓101-106室  
電話：2566 1699 傳真：2566 2900 網站：[www.tergarasia.org](http://www.tergarasia.org) 電郵：[donation@tergarsi.org](mailto:donation@tergarsi.org)

For more details, please refer to our website 詳情請參閱網站資料

# TERGAR OSEL LING MONASTERY

Rebuild for Transformative Learning  
光明重建 - 重建光明



Tergar  
ASIA FOUNDATION  
亞洲德鳴基金會

Your support helps Rinpoche's vision take another step 你的支持協助仁波切的願景更邁出一大步

## A LOOK BACK

### 歷史回顧



The year Mingyur Rinpoche's father, Tulku Urgyen Rinpoche, began to build Osel Ling;  
明就仁波切父親祖古烏金仁波切於這年份在現址建立光明寺  
= 1988

The year Mingyur Rinpoche took responsibility for the monastery and opened a monastic college (shedra);  
明就仁波切於這年份正式接掌光明寺  
= 2010



The total number of Sangha in Osel Ling now  
光明寺現時入住的僧眾人數  
= 180+

The total number of international students who have taken part in Mingyur Rinpoche's teaching programs at Osel Ling  
參加過明就仁波切歷年在光明寺開辦的課程的海外學員總人數  
= 3500+



## Rebuild for Transformative Learning

### 光明重建 - 重建光明

Everything you wanted to know about the reconstruction of Tergar Osel Ling that started in September

尼泊爾德噶光明寺於今年九月底正式開展重建工程，在此為您送上這個項目的更新資料

## GETTING INTO GEAR

### 蓄勢待發

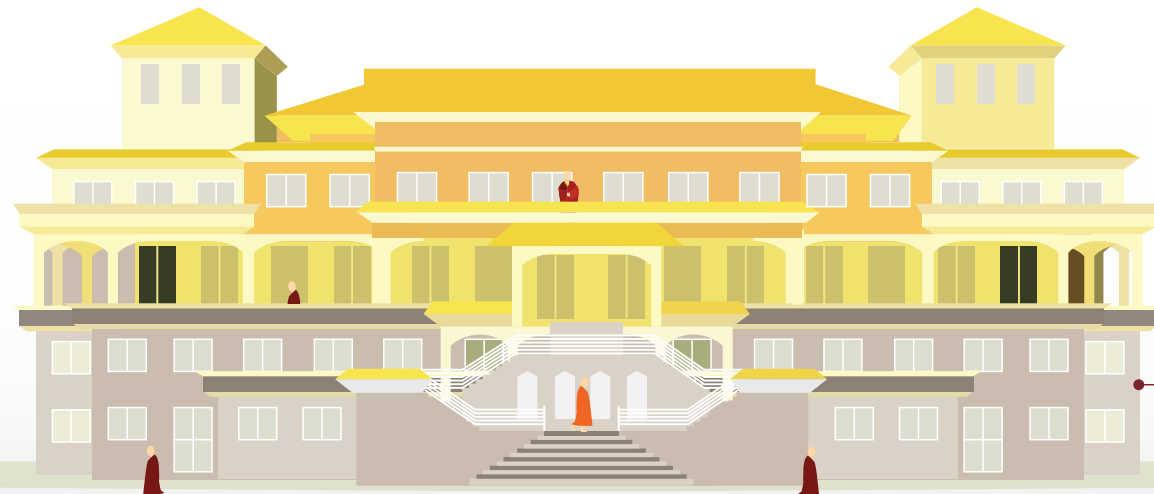


The year of the rebuilding project was officially launched;  
重建項目正式啟動年份  
= 2018

The year the project expected to be completed;  
重建項目預計圓滿年份  
= 2023

The estimated budget of the project;  
重建項目的預算開支  
= USD 10 million

The amount raised since the project planning began in May 2017;  
自2017年5月計劃開始，已籌得的款項  
= USD1.96 million



## ENVISIONING THE FUTURE

### 展望未來

The number of monastics who can be accommodated upon the project's completion  
重建後，可容納僧眾入住數目  
= 300+

The seating capacity of the Main Shine Hall where Rinpoche will give teaching program  
重建後，主樓大殿可容納仁波切開課時入座人數  
= 2500+

The total area of the newly constructed main temple  
將興建寺院主樓的總面積  
= 79600 sq. ft.

The total area of the three newly built monks' quarters  
將興建三座僧眾宿舍總面積  
= 40000 sq. ft.

